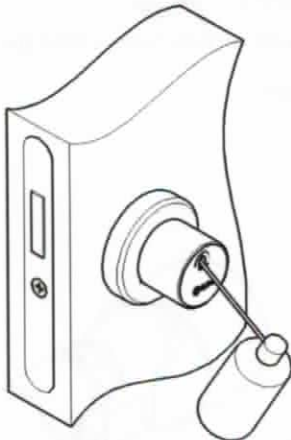


Before installing

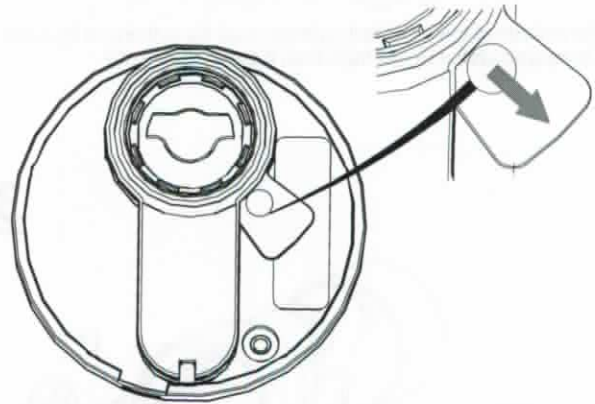
- 1) These instructions should be carefully followed during installation.
- 2) These instructions should be passed on by the installer to the user.
- 3) iLOQ D10x Europrofile cylinder must be installed effortlessly without the use of excessive force.
- 4) If cylinder length adjustment is needed, use iLOQ A10.Ex.x extension piece.
- 5) The product should not be modified in any way except in accordance with those modifications described in these instructions.

Care



After 10 000 usages, clean contact rolls lightly with lint-free cotton pad. Spray small amount of high quality lock oil i.e. CRC lock oil (with PTFE) onto contact rolls.

Alternative cam position



Release locking piece in cam by sharp hook from iLOQ toolbox T007 by sliding it outwards and rotate cam in new position. Ensure that the new position is locked.

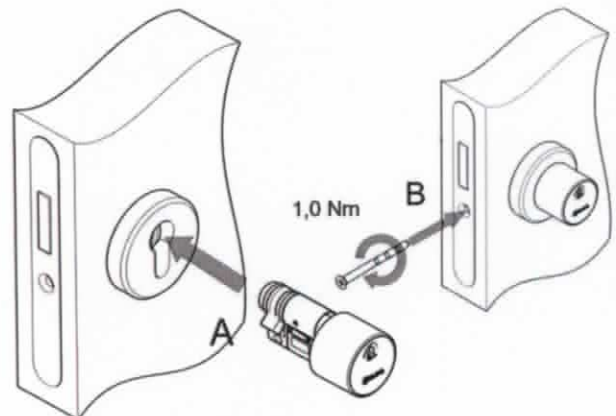
Installation of iLOQ D10x.1xx Series

1



! The installer of the iLOQ lock cylinder must be authorized by iLOQ
! It is recommended to use tools from iLOQ toolbox T007.

2



- A. Slide cylinder through the lock case.
- B. Fix cylinder onto the lock case by iLOQ fixing screw A10.64. Use tightening torque 0.9 ... 1.1 Nm.

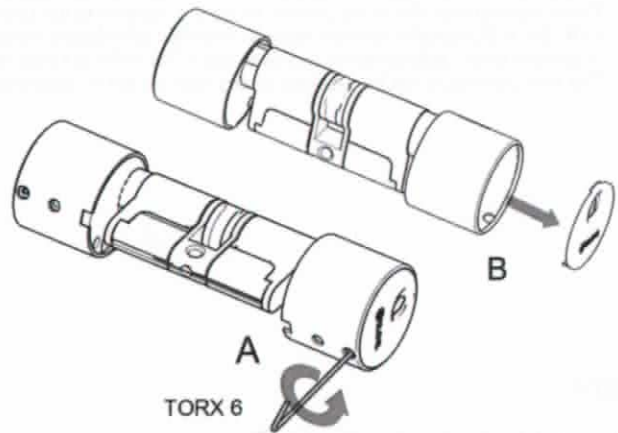
Installation of iLOQ D10x.2xx Series

1



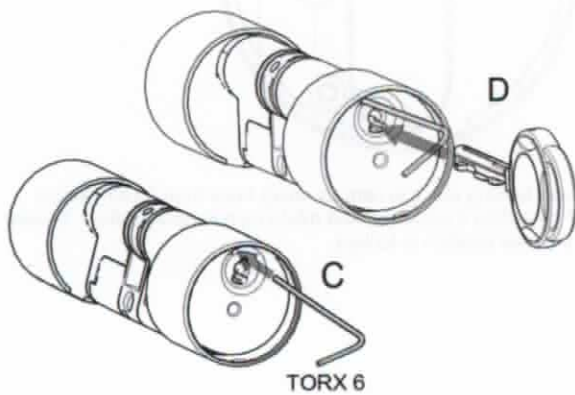
! The installer of the iLOQ lock cylinder must be authorized by iLOQ
! It is recommended to use tools from iLOQ toolbox T007.

2



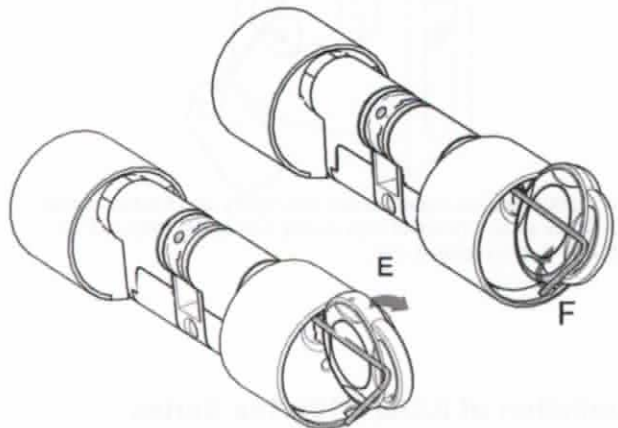
- A. Insert TORX 6 tool from iLOQ toolbox T007 into knob hole and remove screw.
- B. Remove front plate.

3



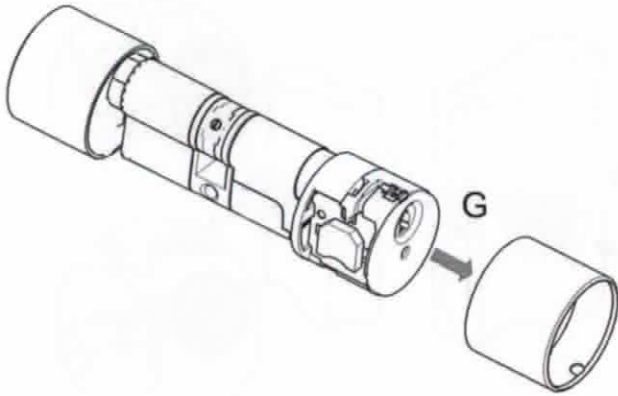
- C. Insert TORX 6 into marked hole.
- D. Insert authorized key into the cylinder.

4



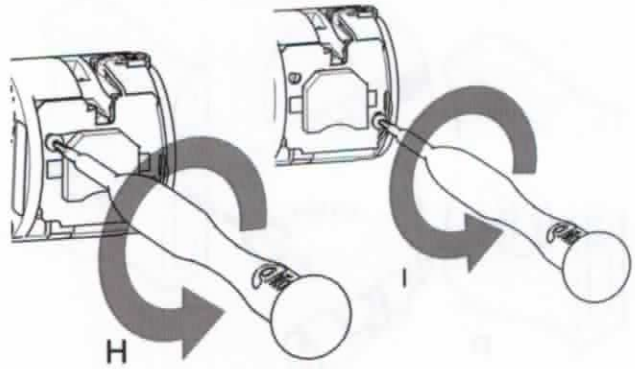
- E. Turn authorized key 15° clockwise.
- F. Turn TORX 6 tool ~90° to clockwise.

5



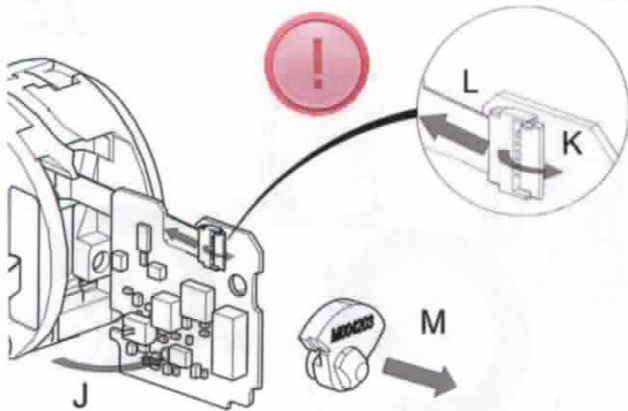
G. Remove knob cover.

6



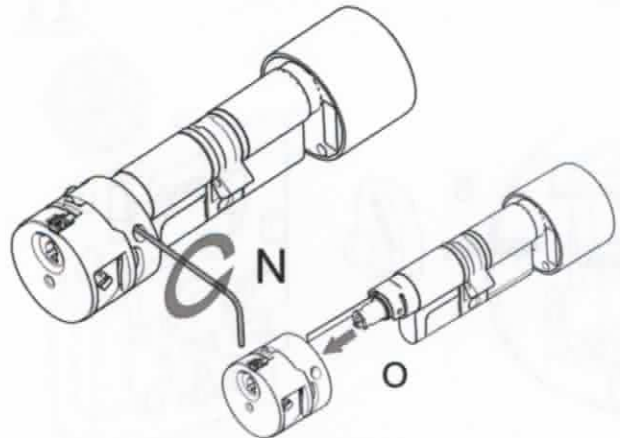
H. Remove screw using TORX 6 tool.
 I. Remove screw using TORX 6 tool.

7

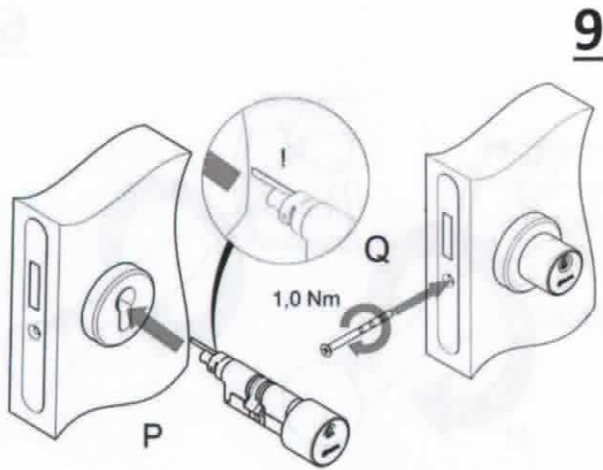


J. Lift very carefully Circuit board (PCB) out from its place by plastic tweezers from iLOQ toolbox T007. Do not use metal tweezers!
 K. Lift flexible flat cable (FFC) connector lid.
 L. Remove FFC from the connector.
 M. Remove plastic disk from the shaft.

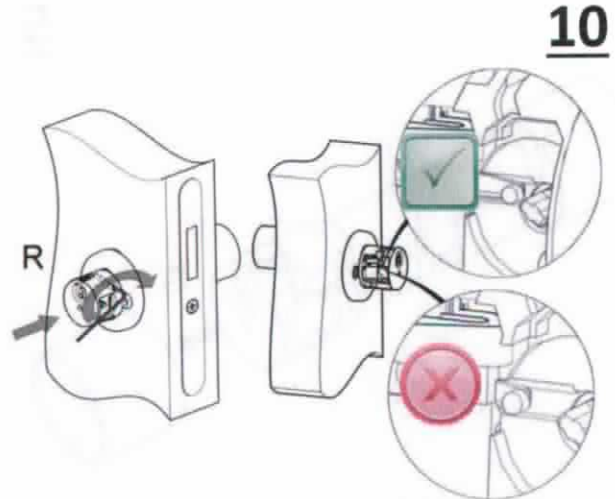
8



N. Loosen knob screw with TORX 6 tool
 O. Remove knob carefully. Take care that FFC doesn't get damaged.



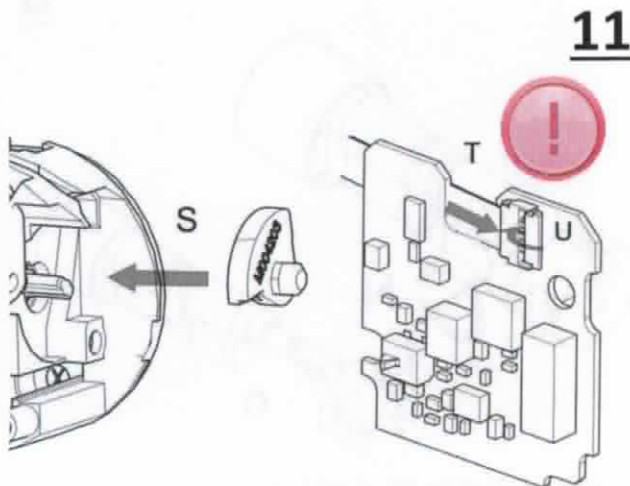
- P.** Slide lock cylinder through the lock case. Take care that FFC doesn't break
- Q.** Fix cylinder into lock case by iLOQ fixing screw A10.64. Use tightening torque 0.9 ... 1.1 Nm.



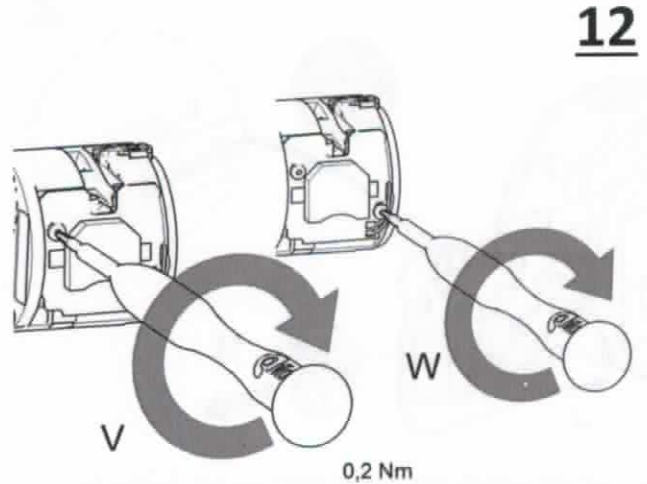
- R.** Assemble knob into frame so that the FFC comes out from knob slot.

Tighten screw with TORX 6 tool

Slide lever on front position.

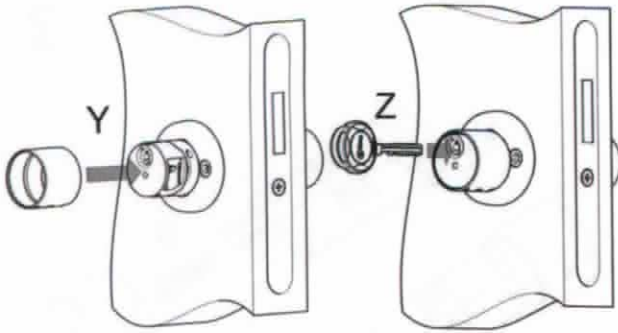


- S.** Put plastic disk onto shaft. Ensure that lever pin is in plastic disk groove!
- T.** Assemble FFC into connector.
- U.** Close connector lid.



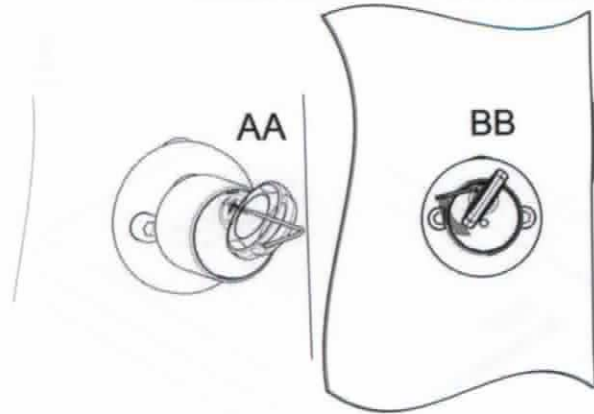
- V.** Put PCB into bottom of the knob. Ensure that PCB is positioned correctly into guides. Mount PCB with screw. Use tightening torque 0.15 ... 0.2 Nm.
- W.** Do the same things like in section V to another screw.

13



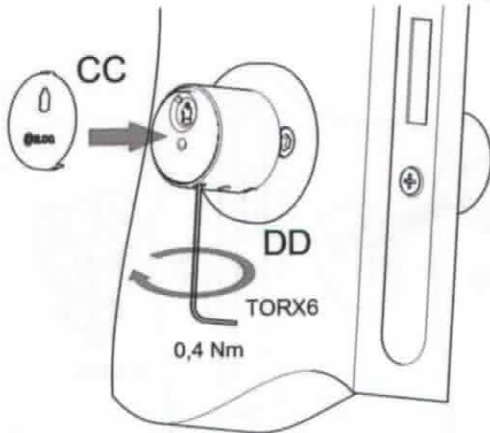
- Y. Install knob cover.
- Z. Insert authorized key into cylinder inner side and turn $\sim 15^\circ$ clockwise.

14



- AA. Insert TORX 6 into cover hole
- BB. Turn screw 90° counterclockwise by TORX 6 tool.

15



- CC. Insert Front plate.
- DD. Tighten screw. Use tightening torque $0.35 \dots 0.45 \text{ Nm}$.

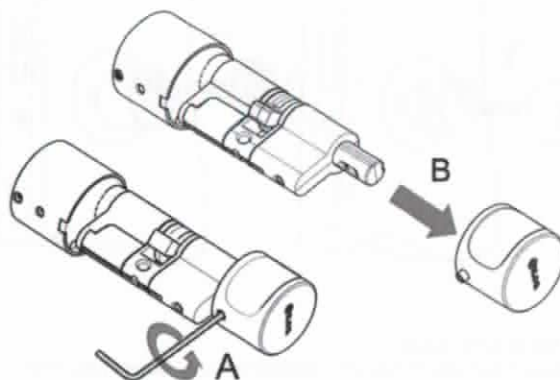
Installation of iLOQ D10x.3xx Series

1



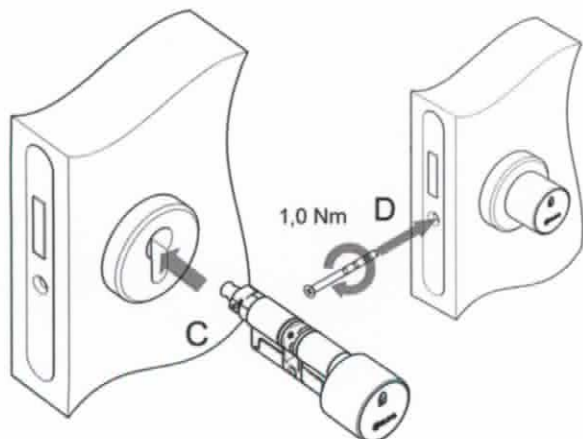
! The installer of the iLOQ lock cylinder must be authorized by iLOQ
! It is recommended to use tools from iLOQ toolbox T007.

2



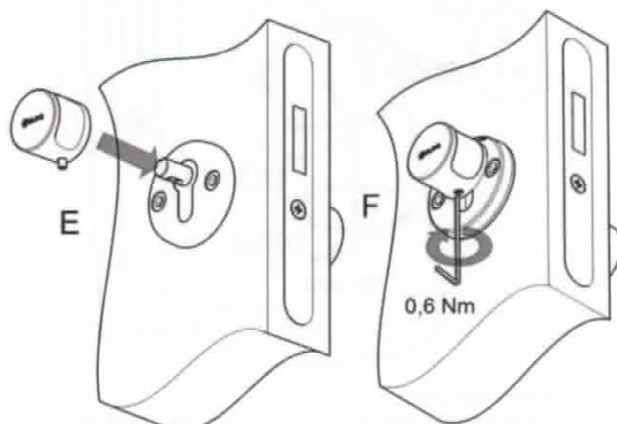
- A. Loosen screw from turning knob by 2 mm allen key from iLOQ toolbox T007.
- B. Remove turning knob.

3



- C. Slide lock cylinder through the lock case.
- D. Fix cylinder into lock case by iLOQ fixing screw A10.64. Use tightening torque 0.9 ... 1.1 Nm.

4



- E. Put turning knob in place.
- F. Tighten screw. Use tightening torque 0.55 ... 0.65 Nm.

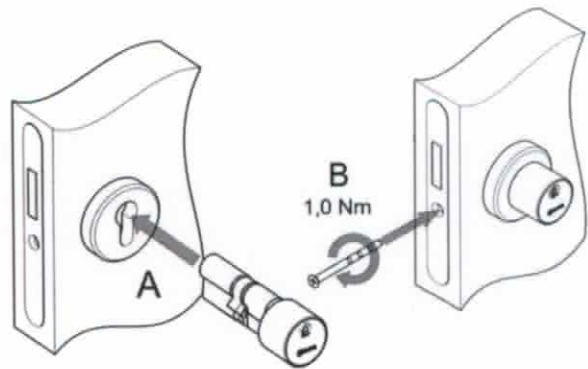
Installation of iLOQ D10x.4xx Series

1



! The installer of the iLOQ lock cylinder must be authorized by iLOQ
! It is recommended to use iLOQ toolbox T007.

2



- A. Slide lock cylinder through the lock case.
B. Fix cylinder into lock case by iLOQ fixing screw A10.64. Use tightening torque 0.9 ... 1.1 Nm.

General notes

1. Before fitting the D10S cylinder to a fire/smoke resisting door, the fire certification should be examined, to ensure conformity.
2. Before fitting the D10S cylinder to a panic/emergency exit door, the certification should be examined, to ensure conformity.
3. Care should be taken to ensure that any seals or weather-stripping fitted to the complete door assembly, does not inhibit the correct operations of the cylinder.
4. Care should be taken to ensure that no projection of the cylinder and associated parts, can prevent the door swinging freely.
5. All components necessary for the specific installation should be fitted
6. The key is to be kept securely so that only authorized person may have access.
7. In case of losing a key, blacklisting of the lost key shall be done with the iLOQ S10 manager software and affected locks shall be reprogrammed.
8. In case of problems with functionality please check following points:
 - Check, if the locking cylinder is damaged.
 - Check, if foreign particles are present in keyway
 - A wrongly located cylinder within the lock case due to incorrectly mounted furniture.
 - A defective mortise lock.
 - Incorrectly mounted locking plates.
 - A warped door etc

